



PRODUCT SHOWCASE

Solutions for Working Smarter™

Optimize Your Workflow!



G1 Powered Mobile Workstation

Part # G1-AT

- 🛡️ PERFECT FOR:
 - BLUEPRINTING, PRODUCTION & DIAGNOSTICS

- 🛡️ INCREASED:
 - ACCURACY
 - EFFICIENCY
 - PRODUCTIVITY

- 🛡️ LOCKS FOR SECURING TECHNOLOGY

- 🛡️ 3-4 DAYS USE ON A SINGLE CHARGE

- 🛡️ RUGGED & DURABLE

- 🛡️ PROUDLY MADE IN USA 



- + DESK ON WHEELS
- + LOCKING UPPER BOX
- + DUAL MONITOR CAPABILITIES
- + ADJUSTABLE HEIGHT
- + SLIDE OUT PRINTER TRAY
- + 10" RUN FLAT CASTERS

866.694.2278



Power System
(Included with ALL Models)
45 Amp / 3 Phase Charger
DC to AC Inverter
Fuses, Power Block, Kill Switch

Available Accessories:



SIDE SHELF
Part # G1A-SS

Accessory Kit
Part # G1A-ACC



SPECIFICATIONS

| | |
|--------------------------------|---------------------|
| Dimensions (L x W x H) | 27" x 21" x 69" |
| Weight | 210 lbs |
| Color | Red |
| Assembly Type | Minor |
| Printer Compartment Dimensions | 9.5" x 21.25" x 19" |
| Top Clamshell Dimensions | 27" x 19.5" x 4.75" |

* Batteries Not Included

Available Versions:

Part #**G1-A**: Base Model

Part #**G1-AT**: Fully Loaded
(Laptop)

Part #**G1-ATT**: Touch Version
(Tablet)

Solutions for Working Smarter™




GOLIATH
CARTS

TGO-DC2 "Powered" Mobile Workstation

Part # TGO-DC2-L

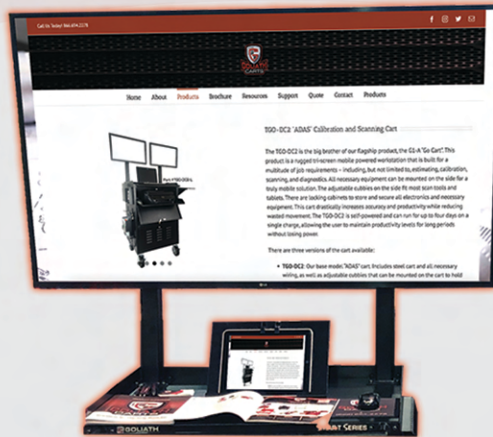


- ☞ TRI-SCREEN POWERED MOBILE WORKSTATION
- ☞ PERFECT FOR:
"ADAS" CALIBRATION & SCANNING
- ☞ ALL NECESSARY EQUIPMENT CAN BE MOUNTED OR STORED FOR A TRULY MOBILE SOLUTION
- ☞ 4 DAYS OF USE ON A SINGLE CHARGE
- ☞ PROUDLY MADE IN USA 

- + STORES SCANNERS & POWER CONDITIONER
- + LOCKABLE COMPARTMENTS
- + ADJUSTABLE SCANNER CUBBIES
- + STORAGE FOR CALIBRATION WEIGHTS
- + RUGGED 6" RUN FLAT TIRES
- + SLIDE OUT PRINTER TRAY

866.694.2278

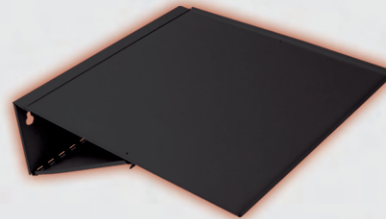
Optional Accessories:



Large Monitor Mount
 Holds up to a 55" Monitor
 *Monitor not Included
 Part #TGO-DC2-MML



Battery Maintainer
 75/100/120 Amp
 3 Phase Charger
 Sufficient, Consistent
 Voltage for Scanning



Side Shelf
 Part #TGO-DC2-SS

SPECIFICATIONS

| | |
|--------------------------------|-------------------------|
| Dimensions (L x W x H) | 21.25" x 48.5" x 69.75" |
| Weight | 200 lbs |
| Color | Black |
| Assembly Type | Minor |
| Printer Compartment Dimensions | 9.375" x 26.5" x 18.5" |

*Batteries Not Included

Available Versions:

Part #TGO-DC2:
 Base Model

Part #TGO-DC2-L:
 Laptop Version

Part #TGO-DC2-T:
 Tablet Version

Solutions for Working Smarter™



L1 Laptop Locker

Part # L1-A
Wall Mounted Cabinet



Keyless Entry System

Part # L1-ASP
Mobile Workstation



Printer Shelf

Mobile Stand

Available Accessories:

Optional Printer Shelf



Tablet Adaptor:
Part # L1A-TA



Also Available -
Branded Tablet
Security
Kiosks:
Part #CK-100

- + ELECTRONIC KEYPAD LOCK
- + FITS TABLETS AND LAPTOPS 17" OR SMALLER
- + ELASTIC STRAPS SECURE LAPTOP IN PLACE
- + CUSHIONED PLATFORM WHERE LAPTOP SITS
- + TABLET ADAPTOR ACCESSORY AVAILABLE

Available Configurations:

- L1-AS: L1-A with Stand
- L1-ASP: L1-A with Stand and Printer Shelf



GOLIATH CARTS

GWS Weld Stand

*For Destructive Weld Testing

Part # GWS-MOB1
Mobile Stand

INCLUDES:

- + SHELF
- + WELD GUN HOLDER
- + WELDING PLIER HOLDER
- + WET/DRY BUCKET
- + WHITE BOARD
- + METAL THICKNESS GAUGE

Part #GWS-FL1
Floor Stand



Coupon
Holder



- + AVAILABLE IN FLOOR MOUNT AND MOBILE VERSIONS
- + SUPPORTS ALL TYPES OF WELDS AND POSITIONS
- + DIMENSIONS: 27" L x 18" W x 87" H

Solutions for Working Smarter™



GOLIATH CARTS

PR1 Parts Cart

- + CONTROL YOUR PARTS WORKFLOW
- + FOLDING SHELVES AND BUMPER STANDS
- + CARTS NEST FOR EASY STORAGE
- + FINE MESH KEEPS SMALL PARTS FROM DISAPPEARING
- + HIGH QUALITY POLYURETHANE WHEELS
- + DIMENSIONS: 46" x 24" x 69"
- SHELF DIMENSIONS: 36" x 24"



Part # PR1-XPC

Available Accessories:

* Fully Loaded (#PR1-XPC)
Includes Panel Cart & RO Holder

RO Holder:

- Part # PR1-RO
- Whiteboard with RO Sleeve
- Hangs on Cart



Panel Cart:

- Part # PR1-PC
- Attaches to Cart
- Stores Large Panels

* Available as Stand-Alone Unit
Part # PR1-PCSA





GOLIATH CARTS

BP Bumper Stands

- + HOLDS (8) BUMPERS; MESH STORAGE SHELF
- + ARMS ADJUSTABLE IN 4" INCREMENTS
- + DIMENSIONS: 40"W X 84"H X 32"D
- + SWIVEL LOCKING CASTERS

Part # BP-Roll
Mobile Rolling



Part # BP-Wall
Wall Mounted



- + (4) UPRIGHTS AND (12) CUSHIONED ARMS
- HOLDS 6 BUMPERS
- + ARMS FOLD FOR EASY STORAGE
- + DIMENSIONS: 44"H X 26"D
- + BOLTS TO WALL (BOLTS NOT INCLUDED)

Solutions for Working Smarter™

866.694.2278

GOLIATHCARTS.com



**GOLIATH
CARTS**

UD Uni-Dolly - Car Dollies

Part # UD4800-A
4800 lb. Capacity



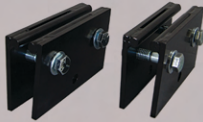
Part # UD9600-A
9600 lb. Capacity

* Consists of (2) UD4800 Dollies with
(1) Connection Kit

- + MOVE VEHICLES SAFELY AND EFFICIENTLY
- EASILY MOVE UNDRIVEABLE VEHICLES
- + ADAPTORS PIVOT FOR FRAME RACKS & TOW TRUCKS
- + SAFER THAN FLOOR JACKS
- + HEAVY DUTY STEEL FRAME, DURABLE POWDER COAT FINISH
- + ADJUSTABLE HEIGHT (14"-21.5") AND WIDTH (30"-60")
- + PRECISION BEARING SWIVEL CASTERS

866.694.2278

Quick Release Adaptors:



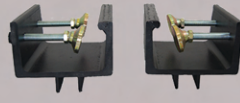
Pinch Weld

Part #UD-4800-PC



Hub

Part #UD-4800-HA



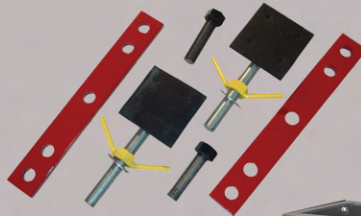
Frame

Part #UD-4800-FA

Connection Kit

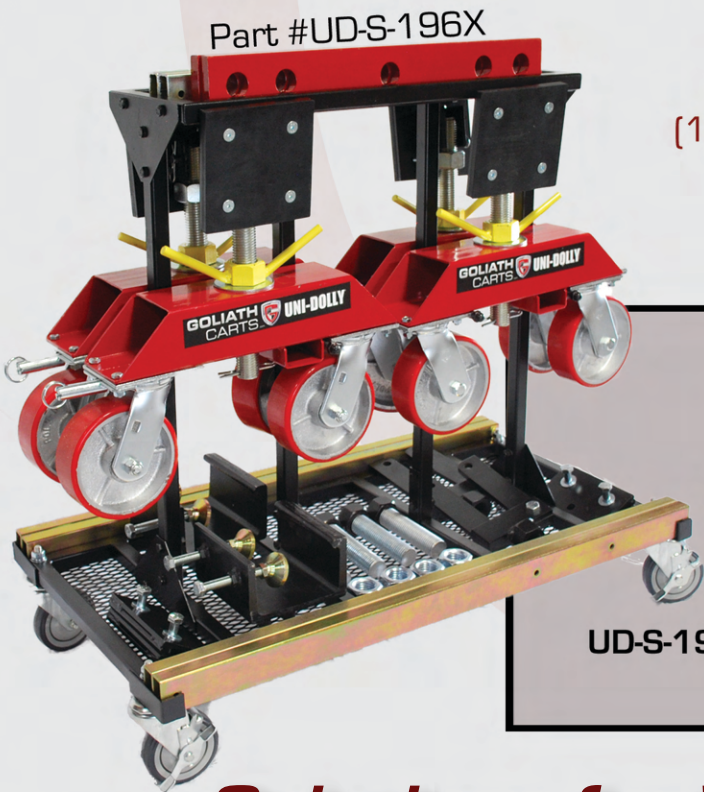
Part #UD-4800-CK

* Joins (2) Dollies Together



Engine Kit

Part #UD-4800-EK



Part #UD-S-196X

Dolly Stand

Part #UD-Stand

* Holds (2) UD4800 or (1) UD9600 with Accessories



Available Packages:

UD-S-148: Stand with (1) UD4800 Dolly

UD-S-248: Stand with (2) UD4800 Dollies

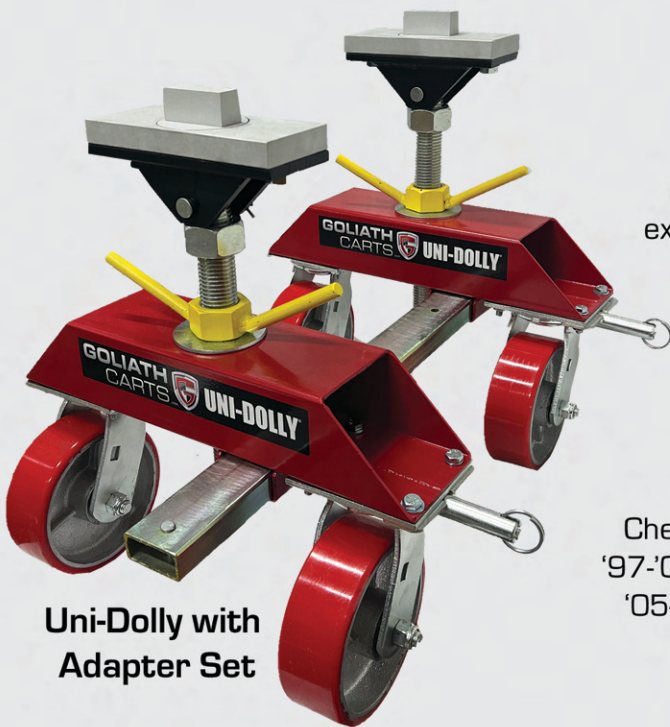
UD-S-196: Stand with (1) 9600 Dolly

UD-S-196X: Stand with (1) UD9600 Dolly with Pinch Clamp, Frame, and Hub Adaptors

Solutions for Working Smarter™

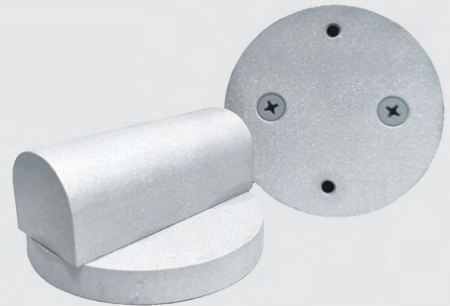


UD Uni-Dolly - Specialty Adapters



Uni-Dolly with
Adapter Set

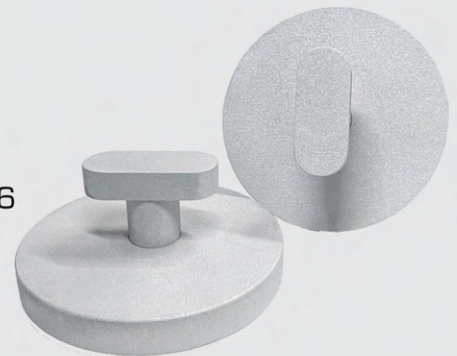
AUDI
#UD-4800-AUD
Audi TT, RS, R8, A6, A7



BMW
#UD-4800-BMW
All Models 2001-Present
except Mini R60 Countryman



CORVETTE
#UD-4800-COR
Chevy Corvette C5, C6, C7, GS Z
'97-'04: Z06 Corvette, z51, C6-Z06
'05-'12: C6 Coupe & Convertible
'14+: C7 Stingray



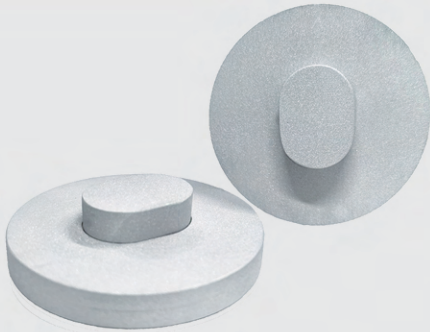
- + MOVE LUXURY VEHICLES SAFELY & EFFECTIVELY
- + DESIGNED TO SECURE AUDI, BMW, CORVETTE,
MERCEDES, PORSCHE & TESLA VEHICLES
- + PROVIDE MAXIMUM CONTROL AND SECURITY
- + RUGGED DESIGN, HIGH STRENGTH 6061 ALUMINUM
- + FITS MOST MODELS

UD Uni-Dolly - Specialty Adapters

PORSCHE

#UD-4800-POR

Boxster and Cayman 911, 964, 993, 996, 997, 991



TESLA

#UD-4800-TES

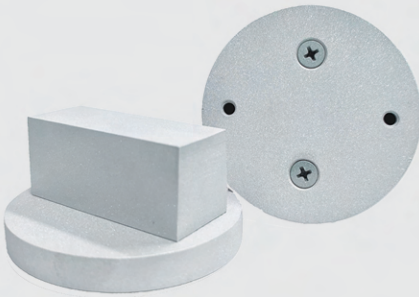
Model 3, Model S, Model X, Model Y



MERCEDES

#UD-4800-MER

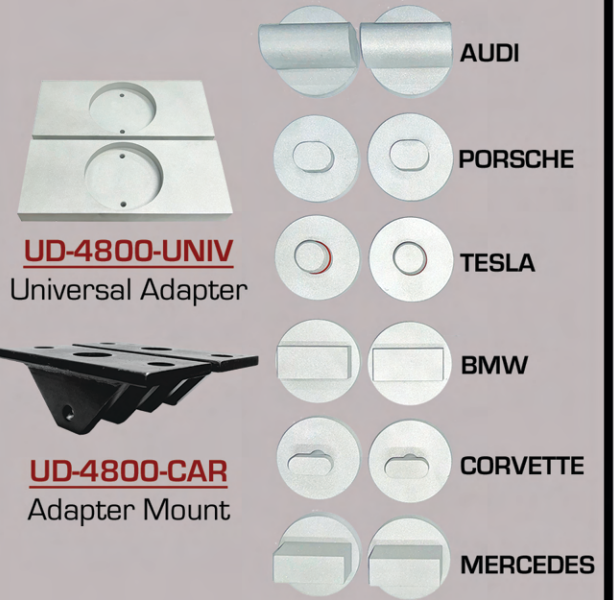
'00-Present: AMG, CLA, E, GLA, C, G, S, SLS, SLK, GT, GL, GLE, GLK, ML Classes



Available Versions:

Mix and Match:

Purchase Individually or in Sets

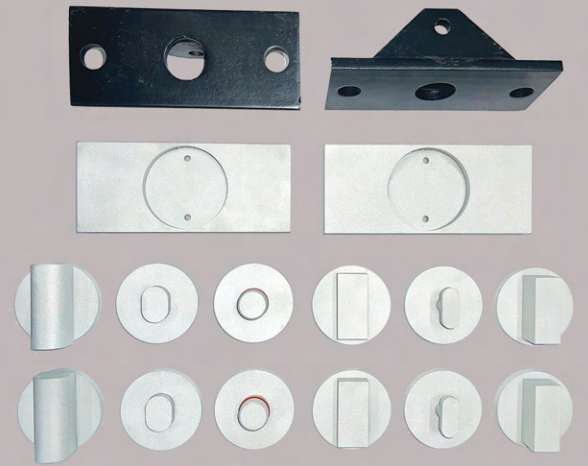


UD-4800-UNIV
Universal Adapter

UD-4800-CAR
Adapter Mount

Full Set:

Includes all (6) adapters, UD-4800-CAR & UD-4800-UNIV





P1 Painter's Prep Cart



Accessories Included:
Part #: P1-BP
Continuous Roll Dispenser

- PERFECT FOR:
 - MANAGING & CONTROLLING INVENTORY
 - POINT-OF-USE PREP CART SOLUTION

Part # P1-A

- LOCKING TOOL AND MATERIAL STORAGE

- HOLDS 6", 12", 18", & 36" ROLLS

- STORES AND SECURES ALL PAINT PREP MATERIALS

- PAPER TREE, MATERIAL CART & TOOL CART ALL IN ONE

- FRONT PANEL OPENS TO CHANGE PAPER. CLOSSES TO KEEP PAPER CLEAN

- PROUDLY MADE IN USA 




Dimensions

66" x 46" x 28"



GOLIATH
CARTS

D1 Mobile Detailer Cart

- CONTROLS AND STREAMLINES THE
DETAIL DEPARTMENT WORKFLOW
- LOCKING TOOL AND MATERIAL STORAGE
- MINIMIZES CROSS CONTAMINATION
- GIVES SHOP MOBILITY & CONTROL OF RESOURCES
- DIMENSIONS: 88" X 22" X 63"
- PROUDLY MADE IN USA 

Part # D1-A



STORES THE FOLLOWING:

- + INTERIOR/EXTERIOR PRODUCTS
- + LARGE FORMAT DETAILING
MATERIALS
- + SEAT COVERS
- + BUFFER PADS
- + MICROFIBER CLOTHS
- + BUFFERS & TOOLS



GOLIATH
CARTS

PG1 Paint Gun Locker

- KEYLESS ENTRY PAINT GUN LOCKER
- SAFELY STORES UP TO 24 PAINT GUNS
- STORAGE FOR PERSONAL ITEMS
- PADDED TO PROTECT EQUIPMENT
- MOUNTS ON WALL OR SIDE OF P1 PAINTER'S TOOLBOX
- DIMENSIONS: 33"H X 22"W X 15"D



KEYLESS ENTRY WITH
KEY OVERRIDE



Part # PG1-A



Optional Accessories:

Magnetic Paint Gun Holder:

Part #PG1-MG

Holds up to 5 paint guns





GOLIATH
CARTS

K1 Key Locker

Part # K1-A

- ☐ KEYLESS ENTRY - KEY STORAGE LOCKER
- ☐ STORE AND CONTROL CUSTOMER KEY ACCESS
- ☐ SAFELY STORES UP TO 120 CUSTOMER KEYS
- ☐ STORAGE FOR PERSONAL ITEMS
- ☐ WALL MOUNTABLE
- ☐ DIMENSIONS: 30"H X 20"W X 3"D



KEYLESS ENTRY WITH
KEY OVERRIDE

866.694.2278

16

GOLIATHCARTS.com



**GOLIATH
CARTS**

TL1-A Tool Locker

STORES:

- CORDLESS TOOLS
- AIR TOOLS
- BATTERY CHARGERS



KEYLESS ENTRY WITH
KEY OVERRIDE



- + LOCKING MECHANISM FOR AIR TOOLS
- + INTERCHANGEABLE SHELVING
- + HAS ADMINISTRATOR & USER PASSWORD
- + CAN BE USED IN WALL MOUNTED
OR STANDING POSITION
- + DIMENSIONS: 33"H x 22"W x 15"D

866.694.2278

17

GOLIATHCARTS.com



GOLIATH CARTS

CM Custom Manufacturing

CAPABILITIES:

- + METAL FORMING AND BENDING
- + PUNCHING AND CUTTING
- + WELDING SERVICES
- + DESIGN, ENGINEERING, AND PROTOTYPING
- + FINISHING, ASSEMBLY, AND INTEGRATION
- + PAINTING AND COATINGS



Have a project or an idea?
Contact us for a quote!



WHY CHOOSE US?

- + FROM DESIGN TO PROTOTYPE TO PRODUCTION
- + COMPLETE MANUFACTURING SOLUTIONS
- + PERFORMANCE, QUALITY, AND ON-TIME DELIVERY
- + LAUNCH YOUR PROJECT TODAY

866.694.2278

18

GOLIATHCARTS.com



Productivity

Increase productivity, accuracy, and efficiency throughout your departments with our expertly designed carts. We build best in class "point of use" carts and solutions!

Mobility

Eliminate wasted movement in your shop! Streamline your departments by giving your techs 95% of their tools and materials right where they need them in a truly mobile solution.

Control

We believe in a "closed system." If you can't lock it you can't control it! Our carts allow you to control access to valuable equipment and materials. Increase accountability and manage inventory!

INDUSTRIES SERVED:

- Industrial
- Aerospace
- Fleet
- Gas & Oil
- Manufacturing
- Military
- Automotive
- Mining

Contact Info:

Goliath Carts, LLC
PO Box 891210
Temecula, CA 92589-1210

Toll Free: 866.694.2278
www.GOLIATHCARTS.com
info@goliathcarts.com

Common Uses:

Mobile Estimating
ADAS
Blueprinting
Vehicle Dollies
Paint Prep Management
Parts Management
Inventory Control
Point of Use Carts
Secure Series Cabinets

***At Goliath Carts we are
Committed to Developing
Products that Help you
Improve!***



ACCREDITED
BUSINESS

BBB Rating: A+