



**Innovative Workflow Solutions**

**Phone: (866) 694-2278**

**Fax: (866) 694-2278**

[www.goliathcarts.com](http://www.goliathcarts.com)

**Goliath Carts, LLC**

**P.O. Box 580**

**Murrieta, CA 92564**

[info@goliathcarts.com](mailto:info@goliathcarts.com)



# *Assembly Guide*

**Goliath Carts.LLC**



## G1 MOBILE WORKSTATION CART ASSEMBLY INSTRUCTIONS



### **GOLIATH G1 CART SAFETY INSTRUCTIONS**

**Please read completely before using the Cart.**

Follow the information warnings written on the sticker affixed to the door of the charging area and battery area. Do not remove warning label from the cart.

Always use the recommended battery types and equipment to prevent damage or failure.

Do not allow children under the age of 18 years of age to use the cart.

Periodically check and ensure the battery, charger, inverter and other components are in their proper positions, free from damage and that all connections are tight.

Do not use the cart for any other purposes than what is described in our manuals and web site.

Always use caution when working on battery and electrical systems and make sure to turn off all power when working on these systems

Do not use substitute parts. Contact the manufacturer or Goliath Carts for replacement parts.

This product is manufactured by Goliath Carts, LLC.  
P.O. Box 580  
Murrieta, CA 92564

# GOLIATH G1 CART ASSEMBLY INSTRUCTIONS

Part #	Qty	Description	Part #	Qty	Description
A	16	5/16 X 1" Zink Plated Hex Bolt	LL	1	Neck
B	16	Flat Washer for 5/16 in bolt	MM	1	T-Bar
C	16	Locking Washer for 5/16 in bolt	NN	1	Top Box
D	4	5/16 in Nuts for 5/16 in bolt	OO	1	Extension Cord Bar
E	23	1/4 in Bolt (3/4 inch long)	PP	1	Foot Rest Bar
F	22	Locking Washer for 1/4 in bolt	QQ	1	Dolly Handle Bar
G	22	1/4 in Nuts for 1/4 in bolt	RR	2	Stationary Casters
H	2	Grips for T-Bar	SS	2	Locking/Swivel Casters
I	1	Quick Release for T-Bar	TT	1	VESA Monitor Mount
J	1	Laptop Security Bracket	UU	4	Screws for VESA
K	1	Cabling Access Tube	VV	1	Buggy Whip Grommet

**PLEASE NOTE: THIS CART IS DESIGNED TO BE ASSEMBLED USING THE ALLEN WRENCHES PROVIDED. DO NOT USE POWER TOOLS TO ASSEMBLE THE CART AS IT MAY DAMAGE THE PRODUCT.**

## Tools Needed:

- 5/16 and 1/4 inch Socket for installing casters and holding bolts during install
- Allen Wrenches (included)
- 8" Phillips Head Long Screwdriver for installing additional monitor on top box.

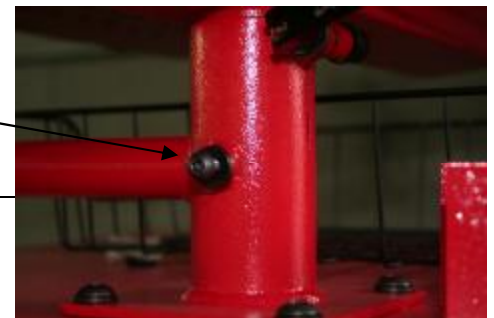


### STEP 1: Install Casters on Bottom of Cart

*Note: Nuts are welded into the cart.*

1. Lay the bottom box of the cart upside down in order to see the bottom
2. Install 2 stationary casters (Part TT) on the back of the cart using the 5/16 in Hex Bolts (Part A). Include a Flat washer and Lock Washer (Parts B, C).
3. Install 2 Swivel Casters (Part UU) on the front of the cart using the 5/16 in. Hex Bolts (Part A). Include a Flat washer and Lock Washer (Parts B, C).

Neck Stabilizer



### STEP 2: Install Neck on Top of Cart

1. Stand the cart up on the casters and lock the front casters to avoid movement
2. Install Neck (Part LL) on the top of the cart using the 5/16 in bolts (Part A) and locking washers (Part C) and 5/16 in nuts (Part D).
3. Install the Neck Stabilizer using 1/4 in bolt (Part E).

### STEP 3: Install T-Bar onto Neck

1. Slide the T-Bar (Part MM) into the hole in the Neck (Part LL)



**IMPORTANT NOTE:** There is a hole in the top of the T-Bar for cables. ***Make sure this hole is pointed to the back of the cart.***

### STEP 4: Install Grips on Push Handle

1. For installation moisten the inside of the grips with some water.
2. Slide the grips onto the bar then put in the end caps



### STEP 5: Install Quick Release on Neck

1. Tighten the bolt at the end of the quick release
2. Tighten the latch to secure the top box



### STEP 6: Install Top Box

1. Place the Top Box (Part NN) on top of the T-Bar (Part MM).
2. Secure the top box to the T-Bar (4 corners of the T-Bar) with (4) 1/4 in bolt (Part E) and locking washers (Part F) and 1/4 in nuts (Part G)



### STEP 7: Install Extension Cord Bar

1. On back of cart, secure the Extension cord Bar (Part OO) with (2) 1/4 inch bolt (Part E) and locking washers (Part F) and 1/4 in nuts (Part G).

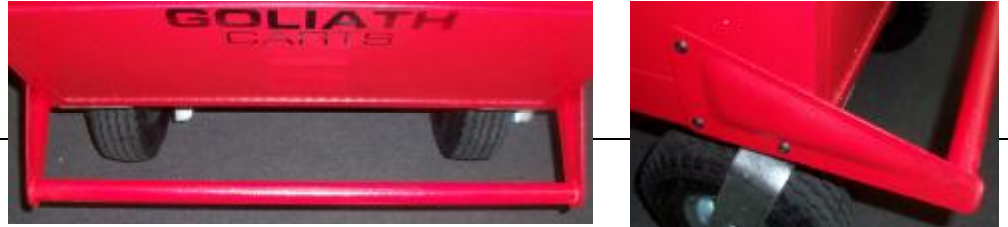


### STEP 8: Install Dolly Handle



- 1 Install Dolly Handle end caps (Part QQ) using (6) 1/4 in bolts (Part E) and locking washers (Part F) and 1/4 in nuts (Part G)

### STEP 9: Install Foot Rest



- 1 Install Foot Rest Bar (Part PP) using (6) 1/4 in bolts (Part E) and locking washers (Part F) and 1/4 in nuts (Part G)

### STEP 10: Install Battery (Batteries)

1. Open compartment on the back of the cart.
2. Place Battery(s) in the compartment. Use the angle irons to secure the batteries.
3. Place the straps over the battery and secure.
4. Connect 2 red wires to the positive battery Terminal and 2 black to the negative battery terminal. Connect the 1 foot cable between the 2 batteries to put them in series.



**IMPORTANT NOTE:** If using (2) 6 Volt batteries make sure to connect them in series (see Diagram Below)

Goliath G1 Cart 6 Volt Battery Setup

Connect 2 Black Negative Terminals Here

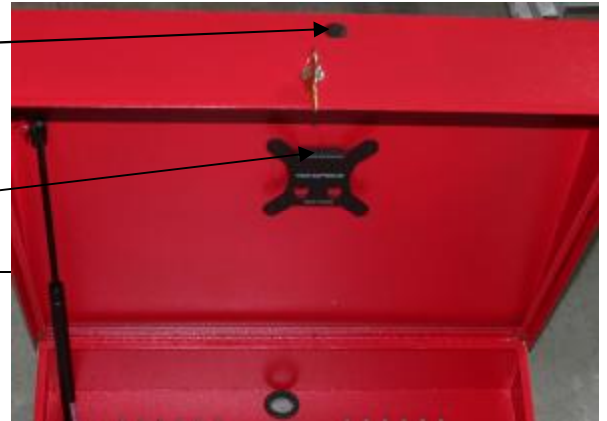


Connect 2 Red Positive Terminals

Connect 1 Foot Red Battery cable here to connect batteries in series

Remove Cap to Gain access to mount monitor using 8 inch Phillips screwdriver.

Remove Screw. Then mount bracket to monitor. Place monitor in box and secure with mounting screw using access hole above.



### STEP 11: Install 2<sup>nd</sup> Monitor Using Included VESA Mount

- 1 Remove Cap on Top of Box.
- 2 Remove screw from Black mounting bracket (Part TT).
- 3 There is a bag with 8 silver screws (Part UU). You will need 4 of them to mount the bracket to the monitor. Select the appropriate screws and mount the bracket to the monitor
- 4 Install the monitor onto the top box using the hooks in the bracket.
- 5 Using the 8 inch Phillips head screwdriver (magnetized) install the screw to secure the top box.

### STEP 12: Install Buggy Whip.

- 1 Place the buggy whip Grommet (Part VV) on the buggy whip
- 2 Place the buggy whip in the hole in the back of the cart and secure with the grommet



### STEP 13: Install Computer Equipment and Printer

- 1 Insert your Computer Equipment and printer power supplies through neck. You can remove the Cable Access Tube (Part K) for easy access
- 2 If using laptop, secure the laptop in place using the Laptop Security Bracket (Part J).



### STEP 14: Power up System (IMPORTANT!)

1. Make sure Kill switch is inserted and in the on position
2. Turn on inverter
3. Turn on power strip and plug in all of your devices: ie Laptop, Printer, Cell Phone, Camera, etc.



**YOUR GOLIATH CARTS - G1 CART ASSEMBLY IS NOW COMPLETE.**

**PLEASE REVIEW ALL SAFETY INSTRUCTIONS!**

**We have FAQ's and Technical Documents on our website**

**Visit us online at [www.goliathcarts.com](http://www.goliathcarts.com)**